



**University of London
External System Academic Committee**

Student Applications

The ESAC is invited to note the applications received from External students, between 1 January 2008 and 31 December 2008, for entry into the 2008/09 academic year. These figures encompass applications received by EISA, as well as Admissions Organisations (Kuala Lumpur, RELC and SPACE), and have been extracted from the EISA Admissions Atlas database.

The number of applications submitted by External students during 2008 rose from 16,414 in 2007 to 18,118 in 2008, which represented a 10.4% increase.

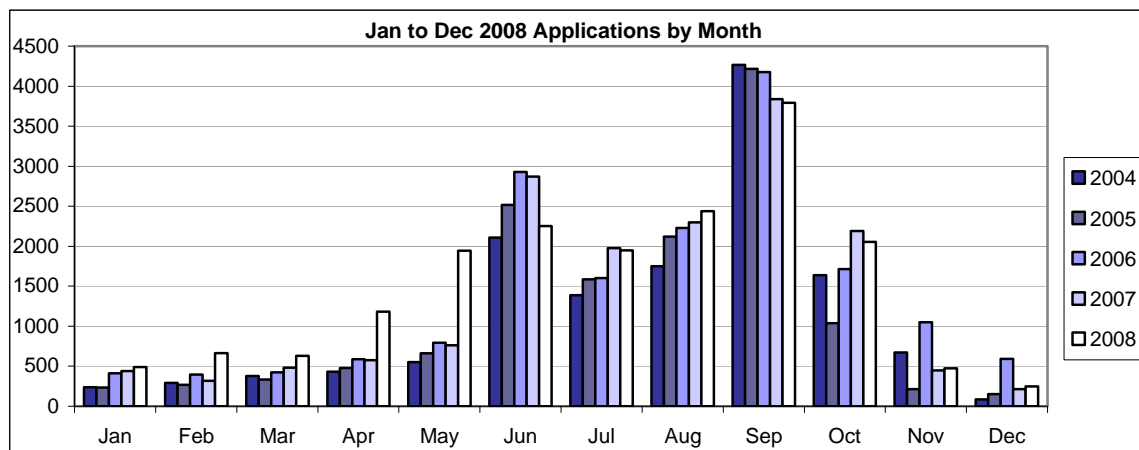
As shown in Table 1 below, there was an increase in both postgraduate and undergraduate applications from 2007, rising 5.5% and 11.3% respectively.

A full breakdown of these applications by programme is set out in Appendix A. It can be seen in Appendix A that there have been significant increases in applications during 2008 for the EMFSS programmes, MSc in Clinical Trials, MBA in International Management and BSc in Business Administration. There was a 71.2% fall in applications onto the MSc in International Primary Health Care but this may be attributed to the fact that Commonwealth Scholarships, which had supported students in the previous two years, were not available for 2008-09 applicants.

Table 1: Jan 08 to Dec 08 - Applications by Level

Level	2004	2005	2006	2007	2008	Total	% Change from 2007
Postgraduate	1462	1917	2463	2524	2664	11030	5.5%
Undergraduate	12338	11899	14452	13890	15454	68033	11.3%
Total	13800	13816	16915	16414	18118	79063	10.4%
% Change		0.1%	22.4%	-3.0%	10.4%		

Chart 1: Jan 08 to Dec 08 - Applications by Level



It can be seen in Table 2 that February, April and May experienced the highest increase in applications processed during 2008.

Table 2: Jan 08 to Dec 08 - Applications by Month

Month	2004	2005	2006	2007	2008	Total	% Change from 2007
Jan	239	235	414	440	490	1818	11.4%
Feb	290	267	398	319	664	1938	108.2%
Mar	377	335	425	481	630	2248	31.0%
Apr	431	477	588	574	1182	3252	105.9%
May	551	660	795	763	1944	4713	154.8%
Jun	2107	2518	2929	2872	2251	12677	-21.6%
Jul	1390	1587	1604	1974	1949	8504	-1.3%
Aug	1752	2121	2228	2298	2438	10837	6.1%
Sep	4268	4215	4178	3840	3794	20295	-1.2%
Oct	1638	1037	1714	2190	2052	8631	-6.3%
Nov	671	214	1050	448	475	2858	6.0%
Dec	86	150	592	215	249	1292	15.8%
Total	13800	13816	16915	16414	18118	79063	10.4%

Award	2004	2005	2006	2007	2008	Total	% Change from 2007
Access Route for degrees in EMFSS	351	428	468	329	307	1883	-6.7%
Advanced Diploma in Education	1	0	0	0	0	1	
BA Classical Studies	14	14	14	15	11	68	-26.7%
BA English	80	95	68	85	114	442	34.1%
BA French	34	45	36	38	32	185	-15.8%
BA French and German	5	6	7	4	12	34	200.0%
BA French and Italian	9	2	6	5	5	27	0.0%
BA Geography	2	0	0	0	0	2	
BA German	7	8	10	9	10	44	11.1%
BA German and Italian	0	1	1	2	2	6	0.0%
BA History	19	22	21	19	22	103	15.8%
BA Italian	21	17	16	15	18	87	20.0%
BA Philosophy	61	69	56	71	90	347	26.8%
BA Spanish and Latin American Studies	16	7	22	24	30	99	25.0%
Bachelor of Divinity	40	67	66	58	81	312	39.7%
BSc Accounting and Finance	567	585	719	902	1237	4010	37.1%
BSc Accounting and Law	0	1	0	0	0	1	
BSc Accounting with Law	12	9	0	2	31	54	1450.0%
BSc Accounting with Law/Law with Accounting	28	33	48	38	10	157	-73.7%
BSc Banking and Finance	730	774	1056	1337	1630	5527	21.9%
BSc Business	780	827	902	727	767	4003	5.5%
BSc Business Administration	57	42	48	205	358	710	74.6%
BSc Computing and Information Systems	526	482	377	304	366	2055	20.4%
BSc Creative Computing	0	0	0	49	71	120	44.9%
BSc Development and Economics	41	47	68	83	95	334	14.5%
BSc Economics	177	118	165	91	142	693	56.0%
BSc Economics and Finance	0	0	215	377	432	1024	14.6%
BSc Economics and Management	553	421	360	354	453	2141	28.0%
BSc Geography	64	0	0	0	0	64	
BSc Geography and Environment	0	0	89	101	81	271	-19.8%
BSc Information Systems & Management	427	482	525	415	302	2151	-27.2%
BSc International Relations	0	0	65	99	144	308	45.5%
BSc Management	467	499	718	488	460	2632	-5.7%
BSc Management with Law/Law with Management	145	160	169	104	119	697	14.4%
BSc Mathematics and Economics	0	133	183	142	176	634	23.9%
BSc Politics	0	0	14	17	17	48	0.0%
BSc Politics and International Relations	242	181	182	157	187	949	19.1%
BSc Sociology	86	80	206	113	84	569	-25.7%
BSc Sociology with Law	0	0	0	18	29	47	61.1%
Diploma for Graduates (Accounting)	20	21	30	27	30	128	11.1%
Diploma for Graduates (Banking)	20	25	36	31	38	150	22.6%
Diploma for Graduates (Development)	17	27	48	41	37	170	-9.8%
Diploma for Graduates (Economics)	46	68	113	122	179	528	46.7%
Diploma for Graduates (Finance)	46	60	83	80	103	372	28.8%
Diploma for Graduates (Geography and Environment)	0	0	0	0	10	10	
Diploma for Graduates (Information Systems)	3	17	7	20	19	66	-5.0%
Diploma for Graduates (International Relations)	35	49	74	68	84	310	23.5%
Diploma for Graduates (Management)	63	75	91	96	88	413	-8.3%
Diploma for Graduates (Mathematics)	0	0	0	0	64	64	
Diploma for Graduates (Politics)	7	14	13	12	19	65	58.3%
Diploma for Graduates (Social Sciences)	13	16	18	7	8	62	14.3%

Award	2004	2005	2006	2007	2008	Total	% Change from 2007
Diploma for Graduates (Sociology)	5	6	4	5	5	25	0.0%
Diploma in Computing and Information Systems	70	89	190	109	80	538	-26.6%
Diploma in Creative Computing	0	0	0	6	19	25	216.7%
Diploma in Economics	1083	250	841	741	794	3709	7.2%
Diploma in English	108	78	82	85	106	459	24.7%
Diploma in Geography	39	0	0	0	0	39	
Diploma in Law	588	198	1075	1109	1166	4136	5.1%
Diploma in Philosophy	45	38	45	42	64	234	52.4%
Diploma in Social Sciences	0	0	0	22	36	58	63.6%
Diploma in Theology	45	58	69	68	78	318	14.7%
EMFSS Graduate Entry Route - Accounting and Finance	2	79	23	0	0	104	
EMFSS Graduate Entry Route - Accounting with Law	0	7	1	0	0	8	
EMFSS Graduate Entry Route - Banking and Finance	2	76	14	0	0	92	
EMFSS Graduate Entry Route - Business	0	77	9	0	0	86	
EMFSS Graduate Entry Route - Development and Economics	0	11	3	0	0	14	
EMFSS Graduate Entry Route - Economics	1	31	9	0	0	41	
EMFSS Graduate Entry Route - Economics and Finance	0	0	4	0	0	4	
EMFSS Graduate Entry Route - Economics and Management	0	46	6	0	0	52	
EMFSS Graduate Entry Route - Information Systems and Management	0	48	13	0	0	61	
EMFSS Graduate Entry Route - Management	1	40	12	0	0	53	
EMFSS Graduate Entry Route - Management with Law	0	10	3	0	0	13	
EMFSS Graduate Entry Route - Politics	0	0	1	0	0	1	
EMFSS Graduate Entry Route - Politics and International Relations	2	66	17	0	0	85	
EMFSS Graduate Entry Route - Sociology	0	6	4	0	0	10	
LLB Graduate Entry Route A	1	2044	588	0	0	2633	
LLB Scheme A	4514	2614	4026	4393	4478	20025	1.9%
LLM	493	7	0	0	0	500	
M Clin Dent (Prosthodontics)	36	55	60	0	0	151	
MA Applied Educational Leadership and Management	25	30	45	41	51	192	24.4%
MA Citizenship and History Education	0	0	4	3	5	12	66.7%
MA Citizenship Education	0	0	4	5	5	14	0.0%
MA History Education	0	0	1	9	8	18	-11.1%
MA in Open, Distance and Flexible Learning	9	4	0	0	0	13	
Master of Laws (LLM)	0	567	660	619	659	2505	6.5%
Mature Entry Route to BSc Computing and Information Systems	0	0	18	6	0	24	-100.0%
MBA (MBA Imperial College)	0	2	1	2	0	5	-100.0%
MBA in International Management (New Regulations)	0	0	1	116	211	328	81.9%
MBA International Management	177	195	64	0	0	436	
MBA International Management (Transitional Regulations)	0	0	118	2	0	120	-100.0%
MRes Educational and Social Research	0	0	0	50	34	84	-32.0%
MSc Community Dental Practice	1	0	0	0	0	1	
MSc Dental Public Health	18	28	19	0	0	65	
MSc Dental Radiology	11	9	15	0	0	35	
MSc Drugs and Alcohol: Policy and Intervention	17	19	0	0	0	36	
MSc Epidemiology	0	0	66	205	140	411	-31.7%
MSc Epidemiology: Principles and Practice	121	121	177	0	0	419	
MSc Health Systems Management	110	2	0	0	0	112	
MSc Human Resource Management	26	37	46	50	57	216	14.0%
MSc in Clinical Trials	0	0	98	116	316	530	172.4%
MSc in International Management	0	0	2	56	53	111	-5.4%
MSc Infectious Diseases	78	92	107	133	90	500	-32.3%

Award	2004	2005	2006	2007	2008	Total	% Change from 2007
MSc Information Security	88	87	74	61	93	403	52.5%
MSc International Business	0	0	0	0	42	42	
MSc International Primary Health Care	14	19	58	59	17	167	-71.2%
MSc Livestock Health and Production	12	6	5	8	7	38	-12.5%
MSc Organisational Psychology	46	52	64	42	43	247	2.4%
MSc Public Health	0	212	300	418	328	1258	-21.5%
MSc Sustainable Agriculture and Rural Development	0	0	0	1	0	1	-100.0%
MSc Veterinary Epidemiology and Public Health	16	18	18	30	16	98	-46.7%
Postgraduate Certificate Citizenship and History Education	0	0	2	0	0	2	
Postgraduate Certificate Citizenship Education	0	0	1	3	0	4	-100.0%
Postgraduate Certificate Educational and Social Research	0	0	0	0	1	1	
Postgraduate Certificate History Education	0	0	3	0	1	4	
Postgraduate Certificate in Applied Educational Leadership and Management	0	3	3	1	5	12	400.0%
Postgraduate Certificate in Applied Geographic Information Systems	9	6	0	0	0	15	
Postgraduate Certificate in International Management (New Regulations)	0	0	4	35	51	90	45.7%
Postgraduate Certificate in International Primary Health Care	0	0	1	3	4	8	33.3%
Postgraduate Certificate in Laws	0	122	177	147	126	572	-14.3%
Postgraduate Certificate in Livestock Health and Production	0	0	0	0	1	1	
Postgraduate Certificate in Open, Distance and Flexible Learning	12	1	0	0	0	13	
Postgraduate Certificate in Veterinary Epidemiology and Public Health	0	0	0	0	4	4	
Postgraduate Diploma Citizenship and History Education	0	0	1	0	0	1	
Postgraduate Diploma Educational and Social Research	0	0	0	2	1	3	-50.0%
Postgraduate Diploma History Education	0	0	0	0	1	1	
Postgraduate Diploma in Applied Educational Leadership and Management	3	2	0	1	6	12	500.0%
Postgraduate Diploma in Applied Geographic Information Systems	17	9	1	0	0	27	
Postgraduate Diploma in Clinical Trials	0	0	17	30	29	76	-3.3%
Postgraduate Diploma in Drugs & Alcohol: Policy & Intervention	9	13	0	0	0	22	
Postgraduate Diploma in Epidemiology	0	0	14	22	33	69	50.0%
Postgraduate Diploma in Epidemiology: Principles and Practice	35	27	8	0	0	70	
Postgraduate Diploma in Health Systems Management	27	1	0	0	0	28	
Postgraduate Diploma in Human Resource Management	4	9	14	9	9	45	0.0%
Postgraduate Diploma in Infectious Diseases	26	35	30	38	31	160	-18.4%
Postgraduate Diploma in Information Security	0	0	0	0	1	1	
Postgraduate Diploma in International Business	0	0	0	0	7	7	
Postgraduate Diploma in International Management	8	19	5	0	0	32	
Postgraduate Diploma in International Management (New Regulations)	0	0	1	10	12	23	20.0%
Postgraduate Diploma in International Management (Transitional Regulations)	0	0	5	0	0	5	
Postgraduate Diploma in International Primary Health Care	1	0	4	4	2	11	-50.0%
Postgraduate Diploma in Laws	0	60	80	93	90	323	-3.2%
Postgraduate Diploma in Livestock Health and Production	5	1	5	1	5	17	400.0%
Postgraduate Diploma in Open, Distance and Flexible Learning	1	0	0	0	0	1	
Postgraduate Diploma in Organisational Psychology	2	5	10	11	6	34	-45.5%
Postgraduate Diploma in Public Health	0	38	50	75	62	225	-17.3%
Postgraduate Diploma in Veterinary Epidemiology and Public Health	5	4	2	7	1	19	-85.7%
Work Experience Entry Route to BSc in Computing and Information Systems	0	0	0	6	20	26	233.3%
Work Experience Entry Route to BSc in Creative Computing	0	0	0	3	4	7	33.3%
Total	13800	13816	16915	16414	18118	79063	10.4%