



**UNIVERSITY  
OF LONDON**  
INTERNATIONAL  
PROGRAMMES

Postgraduate study in

**Clinical Trials**  
**Epidemiology**  
**Global Health Policy**  
**Infectious Diseases**  
**Public Health**

by distance and flexible learning

**2012–2013**

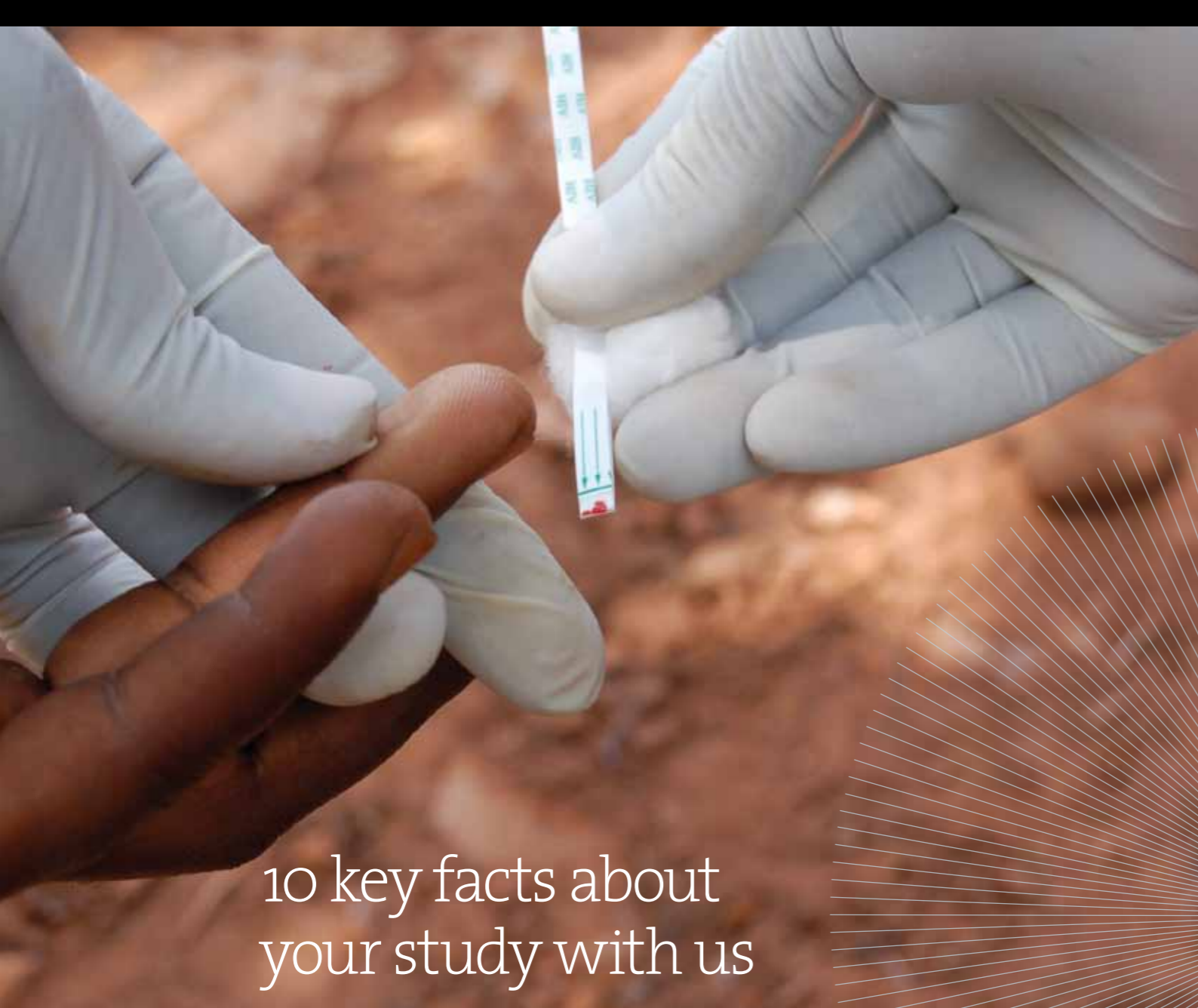
Academic direction by:

LONDON  
SCHOOL of  
HYGIENE  
& TROPICAL  
MEDICINE



[www.londoninternational.ac.uk/health](http://www.londoninternational.ac.uk/health)





## 10 key facts about your study with us

- 1.** You can gain a University of London degree through the University of London International Programmes, from anywhere in the world.
- 2.** All of the programmes in this prospectus were developed by the London School of Hygiene & Tropical medicine, a world-leading centre for postgraduate education in public and global health, so you can rely on the quality of the degree content.
- 3.** The School is one of the highest rated research institutions in the UK and was recently cited as one of the world's top universities for collaborative research.
- 4.** Our degrees will help you to increase your potential career development in health-related fields.
- 5.** You receive comprehensive study guides specially written by subject experts, as well as access to online resources.
- 6.** A web-based conferencing system allows you to pose questions and engage in academic discussions with tutors and fellow students.
- 7.** Teaching staff provide written, personalised feedback and advice on assignments.
- 8.** You can study individual modules for professional updating or special interest, then move onto the Certificate, Diploma or MSc if you wish.
- 9.** As a distance learning student, you may choose to study up to two elective modules at the School in London ('blended learning' study), in place of DL modules.
- 10.** The programmes allow you to spread payments over your study period.

Photograph by Kristen Knudson (HIV testing with TASO of Uganda)

## Contents



### Postgraduate study in health

|  |    |                                      |    |
|--|----|--------------------------------------|----|
| Worldwide Access, Opportunity, International Reputation  | 2  | Computer requirements                | 21 |
| The University of London International Programmes        | 3  | Hear from our Alumni                 | 22 |
| An internationally recognised centre of excellence       | 4  | Application and registration process | 24 |
| Clinical Trials  | 6  | Fees and useful information          | 26 |
| Epidemiology   | 8  | Inclusive Practice Policy            | 28 |
| Global Health Policy                                     | 10 | Study programmes for 2012-2013       | 29 |
| Infectious Diseases                                      | 12 |                                      |    |
| Public Health  | 14 |                                      |    |
| Gaining a prestigious University of London qualification | 17 |                                      |    |
| How you study  | 18 |                                      |    |

Photograph is by Sarah Bandali (Children happily posing for a picture during a break between research interviews in the village of 25 de Junho in the province of Cabo Delgado, Mozambique.)

## Information

### Using this prospectus

There is a colour coded band down the side of each page in this prospectus. The colour of this band either refers to the different types of qualifications on offer or to a specific piece of information that you might need. The banding on this page refers to any general information related to the University or the suite of qualifications. A guide to the other colours used for different types of qualifications is listed below.

### General information

### Clinical Trials

### Epidemiology

### Global Health Policy

### Infectious Diseases

### Public Health

### How to apply

### Key dates

- ❖ **Application deadline:** 30 June
- ❖ **Registration deadline:** 31 August
- ❖ **Course starts:** October
- ❖ **Examinations:** June

**Note:** those wishing to study individual modules for continuing professional development/continuing medical education purposes may apply for modules until 31 August; the registration deadline for those studying individual modules is 30 November.



# Worldwide Access, Opportunity, International Reputation

## Worldwide Access

The University of London International Programmes is unique in its global reach.

- ❖ 50,000 students in more than 190 countries.
- ❖ 100-plus degrees, diplomas and certificates.
- ❖ Over 600 exam centres worldwide.
- ❖ 70-plus institutions formally recognised to offer tuition for our programmes.

Photograph by Angela Baschieri  
(Women in Tajikistan - Poverty Mapping for the World Bank)

## Opportunity

Since 1858, the University of London International Programmes has enriched the lives of hundreds of thousands of students worldwide.

- ❖ Our flexible and affordable study methods enable students to study wherever they live.
- ❖ Our alumni include Nobel prize winners, politicians, designers, engineers, poets, teachers, lawyers and leaders of business and industry.

## International Reputation

Our success is based on the University of London's reputation for high academic standards, built by the outstanding teaching and research of its 18 Colleges.

- ❖ All programmes offered by the University of London International Programmes are developed by Colleges of the University of London. These Colleges are also responsible for the assessment of the degrees.
- ❖ Wherever our students live, they are examined to the same high standard as those studying in London at one of the University's Colleges.



# The University of London International Programmes

Professor Jonathan Kydd,  
Dean, University of London International Programmes



For more than 150 years, the University of London International Programmes has been offering degree programmes to students worldwide. Today, we have 50,000 students studying in over 190 countries, bringing the University of London to you through distance and flexible learning.

As a family of world-class institutions, the University has a reputation for academic distinction in teaching and research, both in the UK and internationally. Ranging from education to management, and from law to philosophy, all

of our programmes are developed by academics within the University of London's constituent Colleges. This ensures that our awards are recognised worldwide for their quality and value, and that students benefit from the academic rigour and cutting-edge research undertaken within the Colleges.

Studying with the University of London is one of the greatest investments you can make in yourself. We look forward to welcoming you into our global community of students and wish you every success.



**'I have been impressed by the way in which the programmes respond to the real challenges of delivering a UK university degree that produces graduates who are thinking, challenging, imaginative and analytical.'**

Professor  
Geoffrey Crossick,  
Vice-Chancellor,  
University of London

# An internationally recognised centre of excellence

Professor Baron Peter Piot  
Director, London School of Hygiene & Tropical Medicine



The London School of Hygiene & Tropical Medicine (LSHTM) is the oldest school of public health in the world. Its mission is to contribute to the improvement of health worldwide through the pursuit of excellence in research, postgraduate

training widely available. We currently have over 2,700 distance learning students registered in over 140 countries studying courses in Clinical Trials, Epidemiology, Global Health Policy, Infectious Diseases and Public Health.

**‘Our aim is to meet the needs of health practitioners, clinicians, policy-makers, laboratory scientists and scientists who want to obtain a world-class qualification in aspects of public health and tropical medicine.’**

teaching and advanced training in national and international public health and tropical medicine, and through informing policy and practice in these areas.

Through its distance learning courses the School has been able to make its specialised advanced

Our aim is to meet the needs of health practitioners, clinicians, policy-makers, laboratory scientists and scientists who want to obtain a world-class qualification in aspects of public health and tropical medicine. I wish you every success in your studies.

## Academic direction: The London School of Hygiene & Tropical Medicine

The London School of Hygiene & Tropical Medicine (LSHTM) provides postgraduate teaching and research in public health and tropical medicine. It is the leading postgraduate medical institution in these subjects in Europe.

It has an international standing with a staff that has unique multidisciplinary and international experience.

The School trains future senior academics, researchers, policymakers

and practitioners in the international medical and public health community worldwide.

Researchers from the London School of Hygiene & Tropical Medicine conduct pioneering research into global public health problems, leading to improved prevention and treatment for a range of diseases such as malaria, TB, HIV/AIDS and pneumonia.

In 2009, LSHTM was awarded the Annual Gates Award for Global Health.



Photograph courtesy of LSHTM

# Clinical Trials

## A welcome from the Course Directors Diana Elbourne, Jaran Eriksen and Julia Langham



Diana Elbourne



Jaran Eriksen



Julia Langham

'The need for rigorous evaluation of components of health care is increasingly recognized worldwide. An important type of evaluation is the randomized controlled clinical trial. These courses are suitable for those who have general or specialist experience in managing clinical trials and aims to broaden their role in the design, management, analysis and reporting of clinical trials as well as for those wishing

to gain an understanding of trials before moving into this increasingly important field.

MSc students may choose from a number of elective modules which will allow them to expand and deepen their conceptual and practical skills. The main disciplinary perspectives will come from clinical trials, statistics and epidemiology, but others will be considered in both the core and optional modules.'

## For whom are the courses relevant?

These courses will be relevant both for those wishing to gain an overall understanding of clinical trials before moving into the field, and for those who have general or specialist experience in this area and aim to broaden their role in the design, management, analysis and reporting of clinical trials.

## Course objectives

These courses aim to provide students with a theoretical and practical understanding of the issues involved in the design, conduct, analysis and interpretation of randomized controlled trials of health interventions. They will be suitable for students working in high, middle and low income countries. Students will be trained to develop skills to scrutinize information, to critically analyse and carry out research, and to communicate effectively.

## Entrance requirements

### All applicants are required to have:

**EITHER** (a) A first or second class honours degree, or the equivalent, from a university or other institution acceptable to the University of London, in a subject appropriate to the course  
**OR** (b) An appropriate professional or technical qualification, together with at least three years' relevant experience, which satisfies the University as a qualification equivalent to a second class honours degree. All applications in this category will be considered on an individual basis. Students who do not satisfy the above requirements may still be admitted at the discretion of the School on the basis of their academic qualifications, work experience and references. All applicants must have an

advanced level of ability to work in English. Applicants may be required to pass or to have passed within the last three years, at the appropriate level, a test of proficiency in English acceptable to the University - for example a TOEFL score of 600 (or 250 in the computerised test) and a minimum of 4.5 in the TWE or a British Council (IELTS) overall score of 7 or over with a minimum of 7 in the written sub-test.

**Please note:** the Clinical Trials courses are online courses, which are supported by asynchronous web-based discussion forums. It is essential that all students have regular access to the internet to access the course materials, participate in web-based discussions, access online library resources and submit assignments. Students must have a computer (the specifications of which are set out on page 21) and are responsible for ensuring adequate system maintenance. Students will also require a calculator.

## Ground-breaking clinical trials – Crash 2

Ian Roberts, Professor of Public Health at the London School of Hygiene & Tropical Medicine, speaks about the ground-breaking Crash 2 clinical trial. This uncovered the importance of early treatment with tranexamic acid in bleeding trauma patients:  
<http://bit.ly/14bSGh>



## Structures

The Postgraduate Certificate, Postgraduate Diploma and MSc include four compulsory core modules:

- CTM101** Fundamentals of clinical trials
- CTM102** Basic statistics for clinical trials
- CTM103** Clinical trials in practice
- CTM104** Reporting and reviewing clinical trials

The Postgraduate Diploma also consists of:

**Four elective modules:** At least three modules must be taken from selection group CTM2. The remaining module can be chosen from other CTM2 modules, or selection groups EPM3/PHM2 (listed opposite)

The MSc also consists of:

**Five elective modules:** At least three modules must be taken from selection group CTM2. The remaining two modules can be chosen from other CTM2 modules, or selection groups EPM3/IDM2/IDM3/IDM5/PHM2 (listed opposite).

**PLUS** One compulsory module: CTM201 Protocol development

**PLUS** One compulsory module: integrating module CTM210

## Notes

- ❖ All CT modules successfully completed will be assigned 15 credits each; the integrating report will be assigned 30 credits.
- ❖ For Postgraduate Diploma/MSc students, credit for one or two modules studied at LSHTM (blended learning study) may be allowed in place of one or two of the above elective modules, subject to module restrictions. An additional fee will be payable.
- ❖ At the discretion of the Examiners, students who have been examined in and have passed three CTM1 modules (which must include CTM101) may be permitted to proceed to elective module studies.
- ❖ To view the module specifications for this course, please visit our website: [www.londoninternational.ac.uk/health](http://www.londoninternational.ac.uk/health)  
 Note that restrictions and pre-requisites may apply to some of the modules.

## Selection groups

Selection group CTM2 – Clinical Trials elective modules:

- CTM202** Trial designs
- CTM203** Project management and research co-ordination
- CTM204** Regulatory affairs, good clinical practice and ethics
- CTM205** Data management
- CTM206** Data monitoring and interim analyses
- CTM207** Design and analysis of epidemiological studies
- CTM208** Further statistical methods in clinical trials
- CTM209** Cluster randomised trials

Additional elective modules available from selection group EPM3:

- EPM301** Epidemiology of communicable diseases
- EPM302** Modelling and the dynamics of infectious diseases
- EPM303** Epidemiology of noncommunicable diseases
- EPM304** Advanced statistical methods in epidemiology
- EPM306** Human genetic epidemiology

Additional elective modules available from selection groups IDM2, IDM3 and IDM5:

- IDM201** Bacterial infections
- IDM202** Nutrition and infection
- IDM203** Parasitology
- IDM204** Viral infections
- IDM205** Healthcare-associated infections
- IDM210** Water and sanitation
- IDM213** Immunology of infection and vaccines
- IDM301** Epidemiology and control of infectious diseases in developing countries
- IDM501** HIV/AIDS
- IDM502** Tuberculosis
- IDM503** Malaria

Additional elective modules available from selection group PHM2:

- PHM201** Analytical models for decision making
- PHM203** Economic analysis for management & policy
- PHM204** Economic evaluation
- PHM205** Environmental epidemiology
- PHM206** Environmental health policy
- PHM207** Health care evaluation
- PHM208** Financial management
- PHM209** Globalisation & health
- PHM210** Managing health services
- PHM211** Medical anthropology in public health
- PHM212** Organisational management
- PHM213** Principles and practice of health promotion
- PHM214** Conflict and health
- PHM215** History and health

**Please note:** If you are choosing to study elective modules from the Epidemiology course i.e. EPM3 modules, please note that some of the CD-ROMs and software provided for use with those modules are not compatible with Mac computers.

# Epidemiology

**A welcome from Anne Tholen (Course Director), James Hargreaves (Course Content Director) and Kath Moser (Deputy Course Director)**



Anne Tholen



James Hargreaves



Kath Moser

'Epidemiology is the key discipline underlying medical research, public health practice and health care evaluation. The understanding of its principles and practice is crucial for those involved in the design or assessment of epidemiological studies and programme evaluation.

Epidemiological methods are also used to describe the size and nature of health problems, to investigate the aetiology of specific diseases, and to evaluate the impact of interventions for treating and preventing ill health.

These courses provide professional epidemiological

training for people who cannot attend regular face-to-face classes. Study materials include stimulating computer-based sessions on CD-ROM, paper-based readings and exercises, and an internet-based discussion forum, allowing students to share their experiences and discuss their studies. Students benefit from contact with the student support team and receive academic support from tutors. We hope you enjoy participating in these courses, find it a rewarding and stimulating experience, and one that enhances your career.'

## For whom are the courses relevant?

These courses are aimed primarily at people who wish to use academic study to deepen their understanding and increase their potential for career development.

The courses provide epidemiology training for professionals in academic departments, research modules or in the health services. They are suitable for those aiming for a career in epidemiology research, academics in other health areas and other health professionals. These courses are also of interest to people who require an understanding of epidemiology, such as medical journalists, and scientific officers in government and industry.

## Course objectives

The study of epidemiology will give students a comprehensive understanding of basic concepts and methods in epidemiology, together with advanced skills in specific applications of epidemiological research methods.

## Entrance requirements

### All applicants are required to have:

A second class honours degree or equivalent, from a university or other institution acceptable to the University of London, in health-related disciplines or in statistics or another appropriate subject. Work experience in a health sciences/health care setting is desirable but not essential. Applicants with an appropriate professional or technical qualification in a health-related field, which satisfies the University as a qualification equivalent to a second class honours degree, together with at least three years' relevant experience, may also be considered on an individual basis.

Students who do not satisfy the above requirements may still be admitted at the discretion of the School on the basis of their academic qualifications, work experience and references.

All applicants must have an advanced level of ability to work in

English. Applicants may be required to pass or to have passed within the last three years, at the appropriate level, a test of proficiency in English acceptable to the University - for example a TOEFL score of 600 (or 250 in the computerised test) and a minimum of 4.5 in the TWE or a British Council (IELTS) overall score of 7 or over with a minimum of 7 in the written sub-test.

**Please note:** the Epidemiology modules are primarily taught using interactive CD-ROM materials, supported by practical workbooks and/or readers. It is essential that all students have regular access to the internet (at least once a week) to participate in web-based discussions, access online library resources and submit assignments. Students must have a computer (the specifications for which are set out on page 21) and are responsible for ensuring adequate system maintenance. Please note that some of the interactive CD-ROM study materials may not be suitable for use on Mac computers. Students will also require a calculator.

## Structures

The Postgraduate Certificate, Postgraduate Diploma and MSc include four compulsory core modules:

**EPM101** Fundamentals of epidemiology

**EPM102** Statistics with computing

**EPM103** Practical epidemiology

**EPM105** Writing and reviewing epidemiological papers

The Postgraduate Diploma also consists of:

**Two compulsory modules:**

**EPM201** Study design: writing a grant application

**EPM202** Statistical methods in epidemiology

**PLUS** Two further elective modules: Both modules must be chosen from EPM3; at least one of the elective modules must be chosen from either EPM301 or EPM303.

The MSc also consists of:

**Two compulsory modules:**

**EPM201** Study design: writing a grant application

**EPM202** Statistical methods in epidemiology

**PLUS** Three further elective modules: At least two modules must be taken from Selection group EPM3, one of which must be either EPM301 or EPM303. The remaining module can be chosen from other EPM3 modules, or from the selection groups listed opposite.

**PLUS** Compulsory project report EPM500 and a qualifying examination paper EPM400.

## Selection groups

**Elective modules from CTM2:**

**CTM202** Trial designs (recommended)

**CTM203** Project management and research co-ordination

**CTM204** Regulatory affairs, good clinical practice and ethics

**CTM208** Further statistical methods in clinical trials

**CTM209** Cluster randomised trials (recommended)

**Elective modules from EPM3 (recommended):**

**EPM301** Epidemiology of communicable diseases

**EPM302** Modelling and the dynamics of infectious diseases

**EPM303** Epidemiology of non-communicable diseases

**EPM304** Advanced statistical methods in epidemiology

**EPM306** Human genetic epidemiology

**Elective modules from IDM2:**

**IDM201** Bacterial infections

**IDM202** Nutrition and infection

**IDM203** Parasitology

**IDM205** Healthcare-associated infections

**IDM210** Water and sanitation

**IDM213** Immunology of infection and vaccines

**Elective modules from IDM3:**

**IDM301** Epidemiology and control of infectious diseases in developing countries (recommended)

**Elective modules from IDM5:**

**IDM501** HIV/AIDS

**IDM502** Tuberculosis

**IDM503** Malaria

**Elective modules from PHM2:**

**PHM201** Analytical models for decision making

**PHM202** Communicable disease control (recommended)

**PHM203** Economic analysis for management and policy

**PHM204** Economic evaluation

**PHM205** Environmental epidemiology (recommended)

**PHM206** Environmental health policy

**PHM207** Health care evaluation

**PHM208** Financial management

**PHM209** Globalisation and health

**PHM210** Managing health services

**PHM211** Medical anthropology in public health

**PHM212** Organisational management

**PHM213** Principles and practice of health promotion

## Notes

- ❖ All EPM modules successfully completed will be assigned 15 credits each; the project report will be assigned 45 credits.
- ❖ For Postgraduate Diploma/MSc students, credit for one or two modules studied at LSHTM (blended learning study) may be allowed in place of one or two of the above elective modules, subject to module restrictions. An additional fee will be payable.
- ❖ At the discretion of the Examiners, students who have been examined in EPM101 and EPM102 only may be permitted to elective module studies.
- ❖ To view the module specifications for this course, please visit our website: [www.londoninternational.ac.uk/health](http://www.londoninternational.ac.uk/health). Note that restrictions and pre-requisites may apply to some of the modules.

# Global Health Policy

## A welcome from the Course Directors Justin Parkhurst and Natasha Howard



Justin Parkhurst



Natasha Howard

‘These courses provide students with an in-depth understanding of health determinants and outcomes that transcend national boundaries, and the policy responses required to protect and promote population health in a globalising world. They are the world’s first Masters level

courses on global health policy by distance learning. In addition to compulsory core modules and a wide range of optional modules which allow for specialisation, it is also possible for students to carry out an individual research project in an area of their own choice.

These courses will be predominantly web-based and multi-media. There will be comprehensive study materials available through the internet, on CD-ROM and paper-based readings and exercises. There will also be email and web-based tutorial support, group discussions and conferencing facilities.’

## For whom are the courses relevant?

The courses are aimed at students and professionals from both health and non-health backgrounds who seek to understand more about the policy environment associated with issues of global health. They will be of value especially to those who may be seeking to assume positions related to issues of global health policy in national, regional or global health organisations, health-related research institutions, non-governmental organisations and private consultancies.

## Course objectives

By the end of these courses, students will be expected to have established a solid foundation in various theories and practices concerned with global health, as well as understand the emerging institutional structures and governance mechanisms to address global health issues. Students should gain a good appreciation of relevant health policy research methods, such as comparative analysis and cross country learning. They should also be able to apply these analytical and methodological skills to address the multifaceted challenges posed by global health issues.

## Entrance requirements

### All applicants are required to have:

A second class honours degree or the equivalent, in a subject appropriate to the course, from a university or other institution acceptable to the University of London; and a minimum of one year’s relevant work experience.

Students who do not satisfy the above requirements may still be admitted at the discretion of the School on the basis of their academic qualifications, work experience and references.

All applicants must have an advanced level of ability to work in English. Applicants may be required to pass or to have passed within the last three years, at the appropriate level, a test of proficiency in English acceptable to the University - for example a TOEFL score of 600

(or 250 in the computerised test) and a minimum of 4.5 in the TWE or a British Council (IELTS) overall score of 7 or over with a minimum of 7 in the written sub-test.

**Please note:** it is essential that all students have regular access to the internet (at least once a week) to participate in web-based discussions, access online library resources and submit assignments. Students must have a computer (the specifications for which are given on page 21) and are responsible for ensuring adequate system maintenance. Please note that some of the interactive CD-ROM study materials used in the elective modules may not be suitable for use on Mac computers.

## Structures

The Postgraduate Certificate, Postgraduate Diploma and MSc include four compulsory core modules:

**GHM101** The economics of global health policy

**GHM102** The politics of global health policy

**GHM103** Environmental change and global health policy

**GHM104** Issues in global health policy

The Postgraduate Diploma also consists of:

**Four elective modules:** Chosen from the selection groups listed opposite.

The MSc also consists of:

**Five elective modules:** Chosen from the selection groups listed opposite.

**PLUS** a project report

**OR** three further elective modules

## Selection groups

**Elective module from EPM1:**

**EPM101** Fundamentals of epidemiology

**Elective modules from EPM3:**

**EPM303** Epidemiology of non-communicable diseases

**Elective module group GHM2:**

**GHM201** Health systems (available from January 2013)

**Elective module from IDM2:**

**IDM213** Immunology of infection and vaccines

**Elective module from IDM3:**

**IDM301** Epidemiology and control of infectious diseases in developing countries

**Elective modules from IDM5:**

**IDM501** HIV/AIDS

**IDM502** Tuberculosis

**IDM503** Malaria

**Elective modules from PHM2:**

**PHM201** Analytical models for decision making

**PHM202** Communicable disease control

**PHM205** Environmental epidemiology

**PHM206** Environmental health policy

**PHM207** Health care evaluation

**PHM211** Medical anthropology in public health

**PHM214** Conflict and health

**PHM215** History and health

## Notes

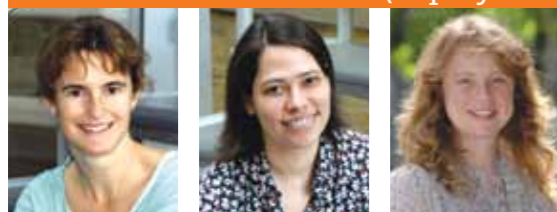
- ❖ All GHP modules successfully completed will be assigned 15 credits each; the project report will be assigned 45 credits.
- ❖ For Postgraduate Diploma/MSc students, credit for one or two modules studied at LSHTM (blended learning study) may be allowed in place of one or two of the above elective modules, subject to module restrictions. An additional fee will be payable.
- ❖ At the discretion of the Examiners, students who have been examined in and have passed three GH modules may be permitted to proceed to elective module studies.
- ❖ To view the module specifications for this course, please visit our website: [www.londoninternational.ac.uk/health](http://www.londoninternational.ac.uk/health) Note that restrictions and pre-requisites may apply to some of the modules.



Photograph by Sarah Bandali (As part of research examining gender norms and HIV/AIDS vulnerability, women gather to discuss these issues using participatory methodologies in the village of Bilibiza, Mozambique.)

# Infectious Diseases

**A welcome from Sara Atkinson (Course Director), Patricia Gorak-Stolinska (Deputy Course Director) and Jackie Cliff (Course Content Director)**



Sara Atkinson Patricia Gorak-Stolinska Jackie Cliff

The Infectious Diseases courses draw upon the School's long tradition in the study of clinical and epidemiological aspects of infectious and tropical diseases. Providing a broad understanding of infectious diseases, together with developing strategies for their control and treatment, the courses will be of particular relevance to in-service health professionals (such as doctors or laboratory staff) who either wish to acquire new knowledge in infectious diseases

or update their current expertise. In addition to compulsory core modules and a wide range of elective modules which allow for specialisation, it is also possible for students to carry out an individual research project in an area of their own choice. Many of the staff involved in the course work closely with international aid agencies and have extensive experience of, and contact with, low- and middle-income countries where infectious diseases are most prevalent.

## For whom are the courses relevant?

These courses are aimed both at recent graduates who wish to pursue an advanced degree, and at people who took their first training some time ago and wish to update their knowledge in this rapidly evolving field or who wish to change career direction.

## Course objectives

The study of Infectious Diseases will give students a comprehensive understanding of the role of biology of infective agents and host on the outcome of infection, and the use of this knowledge in combination with epidemiological and public health approaches to develop rational strategies for the control and treatment of infection.

## Entrance requirements

### All applicants are required to have:

A second class honours degree or the equivalent, from a university or other institution acceptable to the University of London, in a scientific subject (e.g. biology, medicine, nursing, dentistry, veterinary science, pharmacy) or in another scientific discipline which has, in the opinion of the University, included suitable preliminary training. Applicants with an appropriate technical qualification and work experience will be considered.

All applicants must have an advanced level of ability to work in English. Applicants may be required to pass or to have passed within the last three years, at the appropriate

level, a test of proficiency in English acceptable to the University - for example a TOEFL score of 600 (or 250 in the computerised test) and a minimum of 4.5 in the TWE or a British Council (IELTS) overall score of 7 or over with a minimum of 7 in the written sub-test.

**Please note:** the Infectious Diseases courses are taught through provision of study guides, CD-ROMs, readers and textbooks. It is essential that all students have regular access to the internet (at least once a week) to participate in web-based discussions, access online library resources and submit assignments. Students must have a computer (the specifications for which are given on page 21) and are responsible for ensuring adequate system maintenance. Students will also require a calculator.

## Structures

The Postgraduate Certificate, Postgraduate Diploma and MSc include four compulsory core modules:

- IDM101** Principles of biostatistics and epidemiology
- IDM102** Principles of biology
- IDM103** Biology of infectious diseases
- IDM104** Control of infectious diseases

The Postgraduate Diploma also consists of:

**Four elective modules:** At least three must be taken from selection groups IDM2, IDM3, IDM5 or IDM6. The fourth module can be chosen from the selection groups listed opposite, or from 'blended learning' study modules. A maximum of two in-house modules can be chosen in total.

The MSc also consists of:

**Either eight elective modules:** At least four must be taken from selection groups IDM2, IDM3, IDM5 or IDM6. The remaining modules can be chosen from the selection groups listed opposite, or from 'blended learning' study modules. A maximum of two in-house modules can be chosen in total.

- OR** five elective modules
- PLUS** a project report [IDM600]

## Selection groups

| Elective modules from IDM2:   | Elective modules from PHM2:                               |
|---|---|
| <b>IDM201</b> Bacterial infections  | <b>PHM201</b> Analytical models for decision making       |
| <b>IDM202</b> Nutrition and infection   | <b>PHM202</b> Communicable disease control                |
| <b>IDM203</b> Parasitology  | <b>PHM203</b> Economic analysis for management and policy |
| <b>IDM204</b> Viral infections  | <b>PHM204</b> Economic evaluation                         |
| <b>IDM205</b> Healthcare-associated infections  | <b>PHM205</b> Environmental epidemiology                  |
| <b>IDM210</b> Water and sanitation  | <b>PHM206</b> Environmental health policy                 |
| <b>IDM213</b> Immunology of infection and vaccines                                    | <b>PHM207</b> Health care evaluation                      |
| <b>Elective module from IDM3:</b>   | <b>PHM208</b> Financial management                        |
| <b>IDM301</b> Epidemiology and control of infectious diseases in developing countries | <b>PHM209</b> Globalisation and health                    |
| <b>Elective modules from IDM5:</b>  | <b>PHM210</b> Managing health services                    |
| <b>IDM501</b> HIV/AIDS  | <b>PHM211</b> Medical anthropology in public health       |
| <b>IDM502</b> Tuberculosis  | <b>PHM212</b> Organisational management                   |
| <b>IDM503</b> Malaria   | <b>PHM213</b> Principles and practice of health promotion |
| <b>Elective module from IDM6:</b>   |   |
| <b>IDM601</b> Research design, management and analysis                                |   |

## Notes

- ❖ All IDM modules successfully completed will be assigned 15 credits each; the project report will be assigned 45 credits.
- ❖ For Postgraduate Diploma/MSc students, credit for one or two modules studied at LSHTM (blended learning study) may be allowed in place of one or two of the above elective modules, subject to module restrictions. An additional fee will be payable.
- ❖ At the discretion of the Examiners, students who have been examined in and have passed three IDM1 modules may be permitted to proceed to elective module studies.
- ❖ To view the module specifications for this course, please visit our website: [www.londoninternational.ac.uk/health](http://www.londoninternational.ac.uk/health) Note that restrictions and pre-requisites may apply to some of the modules.



Photograph taken by Rajesh Babu (Childhood eye disease survey)

# Public Health

## A welcome from Ros Plowman (Course Director) and Cathy Zimmerman (Deputy Course Director)



Ros Plowman



Cathy Zimmerman

The MSc Public Health courses provide an opportunity for students to gain knowledge and skills that will enable them to address diverse public health issues in low, middle and high income settings.

The courses draw on LSHTM's long history of international work and expertise in a variety of

disciplines fundamental in the field of public health. The diverse curriculum allows students to opt for a broad range of knowledge or to concentrate on specialised areas, such as the environment, health economics or health promotion.

Throughout their studies, Public Health students are

encouraged to consider how their coursework might apply to their past and current experiences in the field. Students' newly acquired skills are of immediate and longer term benefit to the way they think about and contribute to the health of individuals and communities.'

### For whom are the courses relevant?

Students on the LSHTM Public Health courses use academic study to deepen their understanding of public health issues and to increase their potential career development in health-related fields. Applicants to these courses come from diverse backgrounds. Many are health professionals working at a service or policy level, while others wish to obtain public health skills that they can apply to their work in development, community services, government, research or teaching.

### Course objectives

These courses aim to provide students with knowledge and skills to contribute to the health of populations, communities and disadvantaged groups. Students are offered well-established, as well as innovative, public health approaches to the promotion of health and prevention of diseases; the provision and evaluation of treatment and care; and the investigation and control of environmental threats to health.

By the end of these courses students should be able to apply the core disciplines of public health (statistics, epidemiology, health economics and social research) to real world health problems.

### Entrance requirements

#### All applicants are required to have:

A second class honours degree or the equivalent, in a subject appropriate to the course, from a university or other institution acceptable to the University of London; and a minimum of one year's relevant work experience.

Students who do not satisfy the above requirements may still be admitted at the discretion of the School on the basis of their academic qualifications, work experience and references.

All applicants must have an advanced level of ability to work in English. Applicants may be required to pass or to have passed within the last three years, at the appropriate level, a test of proficiency in English acceptable to the University - for example a TOEFL score of 600 (or 250 in the computerised test)

and a minimum of 4.5 in the TWE or a British Council (IELTS) overall score of 7 or over with a minimum of 7 in the written sub-test.

**Please note:** it is essential that all students have regular access to the internet (at least once a week) to participate in web-based discussions, access online library resources and submit assignments. Students must have a computer (the specifications for which are given on page 21) and are responsible for ensuring adequate system maintenance. Students will also require a calculator.

## Structures

### The Postgraduate Certificate consists of:

Four compulsory core modules **plus** two further PHM1 modules

### The Postgraduate Diploma consists of:

Four compulsory core modules, two further PHM1 modules, **plus** four elective modules (at least two must be taken from selection group PHM2, the remainder chosen from the selection groups listed below).

### The MSc consists of:

Four compulsory core modules, one stream-specific PHM1 module, one further PHM1 module, one stream-specific PHM2 module, plus **either** seven elective modules **or** four elective modules and a project report (at least three of the elective modules must be taken from selection group PHM2, the remainder chosen from the list opposite).

### There are four streams to the MSc:

**E&H:** Environment and Health

**HP:** Health Promotion

**HSM:** Health Services Management

**Gen:** General stream

To gain an MSc with a particular stream, you must complete the relevant compulsory modules for that stream. These are marked **C** in the table opposite. Modules marked **R** are recommended for that stream. Where no compulsory or recommended mark is made, module choice is optional.

## Selection groups

### Elective module from EPM2:

**EPM202** Statistical methods in epidemiology

### Elective modules from IDM2:

**IDM201** Bacterial infections

**IDM202** Nutrition and infection

**IDM203** Parasitology

**IDM205** Healthcare-associated infections

**IDM210** Water and sanitation

**IDM213** Immunology of infection and vaccines

### Elective module from IDM3:

**IDM301** Epidemiology and control of infectious diseases in developing countries

### Elective modules from IDM5:

**IDM501** HIV/AIDS

**IDM502** Tuberculosis

**IDM503** Malaria

|   | MSc streams >> | E&H | HP | HSM | Gen |
|---|----------------|-----|----|-----|-----|
| <b>Four compulsory core modules</b>                           |                |     |    |     |     |
| <b>PHM101</b> Basic epidemiology                              |                | C   | C  | C   | C   |
| <b>PHM102</b> Basic statistics for public health and policy   |                | C   | C  | C   | C   |
| <b>PHM103</b> Introduction to health economics                |                | C   | C  | C   | C   |
| <b>PHM104</b> Principles of social research                   |                | C   | C  | C   | C   |
| <b>Additional PHM1 core modules</b>                           |                |     |    |     |     |
| <b>PHM105</b> Issues in public health                         |                | R   |    |     | C   |
| <b>PHM106</b> Environment, health and sustainable development |                | C   |    |     |     |
| <b>PHM107</b> Health promotion theory                         |                |     | C  |     |     |
| <b>PHM108</b> Health services                                 |                |     |    | C   |     |
| <b>PHM109</b> Health policy, process and power                |                |     | R  | R   | R   |
| <b>PHM2 elective modules:</b>                                 |                |     |    |     |     |
| <b>PHM201</b> Analytical models for decision making           |                |     |    | R   |     |
| <b>PHM202</b> Communicable disease control                    |                | R   | R  |     | R   |
| <b>PHM203</b> Economic analysis for management and policy     |                |     |    | R   |     |
| <b>PHM204</b> Economic evaluation                             |                |     |    |     | R   |
| <b>PHM205</b> Environmental epidemiology                      |                | R   |    |     |     |
| <b>PHM206</b> Environmental health policy                     |                | C   | R  |     | R   |
| <b>PHM207</b> Health care evaluation                          |                |     | R  | R   | R   |
| <b>PHM208</b> Financial management                            |                |     |    | R   |     |
| <b>PHM209</b> Globalisation and health                        |                | R   | R  |     | R   |
| <b>PHM210</b> Managing health services                        |                |     |    | R   |     |
| <b>PHM211</b> Medical anthropology in public health           |                | R   | R  |     |     |
| <b>PHM212</b> Organisational management                       |                |     |    | C   | R   |
| <b>PHM213</b> Principles and practice of health promotion     |                | R   | C  |     | R   |
| <b>PHM214</b> Conflict and health                             |                |     | R  |     | R   |
| <b>PHM215</b> History and health                              |                | R   | R  |     | R   |
| <b>PHM216</b> Sexual health                                   |                |     | R  |     | R   |
| <b>PHM305</b> Project report                                  |                |     |    |     |     |

## Notes

- All PHM1 modules successfully completed will be assigned 10 credits each; all PHM2 modules will be assigned 15 credits each; the project report will be assigned 45 credits.
- At the discretion of the Examiners, students who have been examined in and have passed three PHM1 modules may be permitted to proceed to elective module studies.
- For Postgraduate Diploma/MSc students, credit for up to two modules studied at LSHTM (blended learning) may be allowed in place of one or two of the above elective modules, subject to module restrictions. An additional fee will be payable.
- To view the module specifications for this course, please visit our website: [www.londoninternational.ac.uk/health](http://www.londoninternational.ac.uk/health). Note that restrictions and pre-requisites may apply to some of the modules.



**'I would recommend this degree to any student considering distance learning.'**

Enas Newire

**Profile: Enas Newire | MSc Infectious Diseases, Egypt**

I chose to study my Masters through the University of London International Programmes for a number of reasons, including its reputation, the specialisation it offered, the project option, and in particular, because I could study through distance learning. I enjoyed the independence of tailoring my time, which allowed me to accommodate family, work,

and social commitments. I am currently a Molecular Researcher at the Cairo-based US Naval Medical Research Unit 3 (NAMRU-3), which deals with emerging disease threats. The degree gave me a deep understanding of various molecular mechanisms I handle every day and taught me to evaluate the potential of scientific research in different areas. It qualified me

in cutting edge and state-of-the-art scientific technologies, which is essential to my career. My major challenge was sticking to the study schedule I made, while coping with a busy work schedule during the H1N1 (swine flu) pandemic outbreak. I overcame this by drawing on the Frank Lloyd Wright quote: "The thing always happens

that you really believe in; and the belief in a thing makes it happen." I would recommend this degree to any student considering distance learning. It is the best qualification for a highly committed, ambitious person whether he/she is in a job with a lot of travel, a stay-at-home parent, or just unable to study abroad for a long time.'

# Gaining a prestigious University of London qualification



Photograph by Mirna Robert - Du Ky van Beest Holle (HIV meeting, rural Tanzania)

As an International Programmes student you register with the University of London for one of its awards. The academic direction of your programme – including the syllabus, assessment, learning resources and, where given, academic support – is the responsibility of a particular College, or consortium of Colleges, of the University of London, known as the 'Lead College'. LSHTM is the 'Lead College' for the programmes in this prospectus.

When you graduate with a degree, diploma or certificate from the University of London you will be sent two documents - a final diploma (the parchment you receive on graduation) and a Diploma Supplement. The final diploma indicates that you were registered with the University of London and awarded a University of London degree or diploma, and give the name of the Lead College which conducted the examinations.

The University of London logo and the Vice-Chancellor's signature are incorporated. The Diploma Supplement describes the nature, level and content of the programme you successfully completed and includes a transcript of courses taken and marks achieved, as well as the overall classification. It also provides further information about the role of the Lead College and method of study.

# How you study



## Study support

You study independently, at a time and pace that suits you (subject to some course-specific deadlines), using the comprehensive study materials provided, with learning support from our academic staff.

We know that if you have a full-time job, family or other commitments, and wish to study at a distance, you will have many calls on your time. We therefore allow you between one and five years in which to complete the Postgraduate Certificate, and between two and five years in which to complete the Postgraduate Diploma or the MSc.

The study year runs from the beginning of October through to the June exams, during which time tutorial support is available. Students carrying out projects are assigned personal supervisors to support their project work throughout the summer.

Those writing the CT integrating report will also continue to have tutorial support over the summer. Deadlines for submission of coursework vary per course but are usually in March, May and September.

## Students receive support in various ways:

- ❖ a web-based conferencing system is available for students to pose questions and engage in academic discussions with tutors and fellow students
- ❖ teaching staff provide written, personalised feedback and advice on assignments
- ❖ students can communicate with other distance learning students, either individually or they may set up their own learning support groups.

## Study materials

After you register you will receive your study materials. Students will receive details of how to use the online learning environment effectively. Study materials may include:

- ❖ Subject guides
- ❖ Readers
- ❖ Textbooks
- ❖ CD-ROMs/additional computer software (e.g. Stata)
- ❖ Past examination papers and Examiners' reports
- ❖ Handbooks
- ❖ Students also have access to the school's online library resources.

## What you will need

You will need access to a scientific calculator. All students need a computer capable of running the software provided (a full specification is given on page 21).

**Please note:** some of the CD-ROMs and software provided for use with EPM3 modules may not be fully compatible with Mac computers.

## Credit system

LSHTM operates a credit system for its taught courses, consistent with the English and European (ECTS) credit systems. This allows other educational institutions and employers across Britain, the rest of Europe and beyond to more easily understand and recognise the amount and standard of study which courses at the School involve. Credits are awarded for successful completion of modules and the project/integrating report. A total of 180 credits are required for an MSc degree, 120 for a Postgraduate Diploma, and 60 for a Postgraduate Certificate. Specific requirements are given on the individual course pages. All credits obtained will be shown on final course transcripts.

## Assessment

Assessment varies from module to module but will include a combination of unseen written papers and written assignments. Details are given in the module specifications. Examinations take place once a year in June (please note: it is **not** possible to hold examinations at other times of year). These are normally held in a student's country of residence. We have examination centres in over 190 countries worldwide (for details please visit: [www.londoninternational.ac.uk/exams](http://www.londoninternational.ac.uk/exams)). They are arranged mainly through Ministries of Education or the British Council. Students

will need to pay a fee to their local examination centre.

**Please note:** If you fail an examination at the first entry you will be allowed one further attempt.

## Time commitment

Because individuals differ in how many hours per week they need to devote to study, and how quickly they wish to complete the programme, it is difficult to be precise about how many hours you will require for your study. A rough guide, however, is that to complete in the minimum period (one year for the Postgraduate Certificate, two years for the Postgraduate Diploma or the MSc) you should be prepared for between 15 and 25 hours of study per week throughout the study year. Most students take between 3–5 years to complete their MSc.

## Individual modules

If you wish to take an individual module or modules, perhaps for professional updating or special interest, or you would like to 'sample' the course, you may take modules as a short course student.

Before applying to register for a formal award (i.e. Postgraduate Certificate, Postgraduate Diploma or MSc), applicants who do not have the usual academic qualifications may be required to take one individual module in order to qualify for consideration for entry.

Students who complete individual modules and then wish to move onto Certificate, Diploma or MSc registration may do so. Grades awarded and credits assigned for individual modules may be transferred to a Certificate, Diploma or MSc, and students will be required to pay the initial registration fee and the fees for the remaining modules.

## Studying modules in London

Distance learning students may choose to study up to two elective modules at the School in London ('blended learning' study). London-based modules run for 2.5 days per week over a five-week period. Please note that not all modules will be available for study via 'blended learning' and this option is only available to students who have completed the compulsory core modules.

Students selecting this study option will be responsible for arranging their own travel to, and accommodation in, London during this period of study, and will be required to pay additional module fees.

## Profile: Isaac Boakye | Current Clinical Trials student, Ghana

'I needed formal research training particularly focusing on clinical trials. This was to meet the challenges inherent in designing, conducting, reporting and analysing both hospital and field-based clinical trial.

This programme has exposed me to so many areas of clinical trials, providing me with theoretical knowledge as well as practical experience far beyond my anticipation. The programme is very practical and intellectually stimulating. I can now

appreciate very well the fast growing and exciting field of clinical trials. I now understand the reasons behind the research methodologies I have used in the past but never appreciated why. I now conceptualise clinical data to be a valuable asset intricately involved in changing and saving the lives of millions of people worldwide. Simply put, I know now that research is designed to solve problems. With the training that I have received, I am strategically

positioned to appropriately advise young investigators, both local and international, seeking assistance on research methodologies.

I heartily recommend this programme due to its uniqueness, its course structure, the theoretical and practical exposure and, above all, receiving a certificate from a well recognised international university with a long history.'

Isaac currently works as a Senior Health Research Officer at the R&D unit of the

Komfo Anokye Teaching Hospital, a tertiary referral hospital in Kumasi and the second largest hospital in Ghana.



**‘Having an MSc in Infectious Diseases gives me the confidence that I have the basic knowledge to understand all aspects of infectious disease control.’**

Mika Kawano

**Profile: Mika Kawano**  
MSc Infectious Diseases, Switzerland

‘I had been working in WHO for five years in the area of infectious diseases. It was very important to have deep and updated knowledge. All of the degree modules were relevant – they helped me to understand more advanced issues like how you create vaccines or how a virus adapts itself to a new environment. There were lots of things that I didn’t quite understand in the meetings in WHO. Going through all of the modules, now I understand.

After the first four compulsory modules I picked nine optional modules. In those days I was working in geographical information systems (GIS), so I took environmental health – which I thought had lots of potentials for applying GIS – and nutrition, because I was interested in the relationship between nutrition and infectious diseases, such as malaria. It’s important

to have that knowledge when we discuss policies for infectious diseases control in developing countries settings.

I’m part of an international health regulation team and have been heavily involved with H1N1 influenza [swine flu]. Having an MSc in Infectious Diseases gives me the confidence that I have the basic knowledge to understand all aspects of infectious disease control. My current area of work is more to do with coordination than any scientific aspects of influenza pandemic response, but still it’s important to understand what’s happening – I have the basic knowledge to grasp it in a short period of time. That helps a lot. I’m proud to be part of WHO. As long as I can make a contribution, that’s fine.’

Mika Kawano completed her MSc Infectious Diseases in 2007. She is a UN official at WHO.

## Computer requirements



**Epidemiology, Global Health Policy, Infectious Diseases and Public Health**

**Processor:** Pentium, 90MHz (Pentium 2 class)  
**OS:** Windows 98 SE, Windows 2000 or later (Windows XP, Vista, Windows 7 32-bit only – please note some applications may not work with Windows 7 64-bit).  
**RAM memory:** 512MB (1GB).  
**Hard disk space:** 200MB (GHP and ID), 1GB (EP and PH) of available disk space or higher.  
**Graphics:** 256 colours (minimum), 65536 colours or higher (recommended). Resolution 800 x 600 or better (1024 x 768 or higher recommended).

**All students need a computer capable of running the software provided.**

A computer with the minimum, rather than recommended, specifications will allow a student to use the software supplied but may be rather slow. The recommended computer specification appears in brackets.

Students should be familiar with the use of a computer keyboard and mouse, and Microsoft Windows-based software, particularly Word and Excel. Students should have experience of using Microsoft Windows to open, save and close files, folders and applications. Students should also be able to use a web browser, such as Microsoft Internet Explorer.

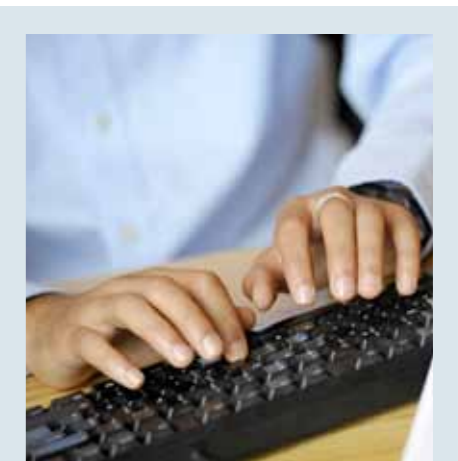
**Clinical Trials**

**Processor:** Pentium 3, 500MHz (Pentium 4 class)  
**OS:** Windows 2000 or later (Windows XP, Vista, Windows 7 32-bit)  
**RAM memory:** 512MB (1GB)  
**Hard disk space:** 4GB free (20GB, 5GB free)

**Graphics:** 256 colours at 800x600 pixels, screen resolution recommended colour depth of 24-bit Truecolor (known as ‘millions of colours’ on Macintosh systems).

- ❖ If you wish to use a Mac you will need OS X 10.1 or later (OS X 10.3 or later).
- ❖ The computer will need to be fitted with a CD-ROM drive and attached to either a laser or inkjet printer. You will also need one of the following browsers: Internet Explorer 6.0 or above, Firefox 2.0 (or later version). Email and Web access are also essential. 56k modem or higher.
- ❖ Students who wish to submit assignments in pdf format must have Adobe Acrobat.
- ❖ Students studying elective module CTM209 should check the module outline for further specifications.
- ❖ Please note that some of the CD-ROMs and software provided for use with EPM3 modules may not be fully compatible with Mac computers.
- ❖ Sound card and headset (recommended), or sound card, speakers and microphone.

- ❖ The computer will need to be fitted with a CD-ROM drive and attached to either a laser or inkjet printer.
- ❖ Email access is essential.
- ❖ Regular web access is essential (at least once a week), to participate in web-based discussions, access online library resources and submit assignments.
- ❖ Sound card and headset (recommended), or sound card, speakers and microphone.



**Please note:** with the exception of the Clinical Trials courses, **Apple Macs are not supported; some interactive CD-ROMs are not compatible with Macs.**

# Hear from our Alumni

Over the last 10 years, the courses in this prospectus have been taken by scientists (particularly epidemiologists and biologists), clinicians, doctors, nurses, policy makers, academics, clinical trials specialists and chief medical officers. Many of the courses are also suitable for those with a general interest in one of the areas of clinical trials, public health or tropical medicine.

Some of our alumni have agreed to be Student Ambassadors. They offer advice to prospective students about how they managed their studies successfully and offer tips about balancing their study with work and family commitments.



Photograph by Kathryn Church. Interviewing for a community survey in Swaziland on access to health services. September 2009

## AUSTRALIA

### Dr Irmgard Bauer Postgraduate Diploma in Infectious Diseases

Dr Irmgard Bauer, a senior lecturer at James Cook University, completed her Postgraduate Diploma in Infectious Diseases in 2003.

**Email:** irmgard.bauer@jcu.edu.au

## CANADA

### Steven Hilts MSc Epidemiology Environmental Manager

Steven Hilts resides in Rossland, BC and completed his MSc Epidemiology in 2004.

**Email:** shredski@telus.net

### Bernard MacLennan MSc Infectious Diseases

Bernard MacLennan lives in Nova Scotia and is a registered microbiologist. He completed his MSc Infectious Diseases in 2006.

**Email:** bernard\_maclellan@cbu.ca

## EGYPT

### Enas Newire MSc Infectious Diseases

Cairo-based molecular researcher Enas Newire completed her MSc in Infectious Diseases in 2010.

**Email:** loneaman1@student.london.ac.uk

## INDIA

### Dr Poornima Prabhakaran MSc Epidemiology

Research fellow Dr Poornima Prabhakaran completed her Postgraduate Diploma in Epidemiology in 2006.

**Email:** poornimaap@yahoo.co.uk

## PAKISTAN:

### Dr Syed Abdul Mujeeb MSc Epidemiology

Karachi-based doctor and associate professor Dr Syed Abdul Mujeeb completed his MSc Epidemiology in 2006.

**Email:** smujeeb@super.net.pk

## Profile: Paul Vaucher | MSc Clinical Trials, Switzerland

'I chose to study for the MSc in Clinical Trials by distance learning with the London School of Health and Tropical Medicine as it is one of the best European schools in biomedical research.

The web-based forum was a great interactive place where students and academics could discuss issues. I also appreciated the

constructive feedback from academics after our written assignments. And maybe the best moment was my director's smile when I handed her a copy of my master's assignment which was published in the journal *Vaccine*.

I was initially an osteopath but I am embarking on a new career in research in non-pharmaceutical fields. I have started my PhD in Neuroscience in Legal Medicine at the University of Geneva.'



'Epidemiology helped me to have strong arguments in prioritising support in difficult situations where the needs are so important but your resources (human as well as financial) are limited.'

Minh-Ly Pham Minh

## Profile: Minh-Ly Pham Minh Postgraduate Diploma in Epidemiology

'After a few years of field experience in humanitarian work, I felt the need for some academic knowledge to improve my work and be able to give better support to the teams I was supervising. Reporting and epidemiological analysis was also a field I wanted to improve. The University of London has a very good reputation, especially in the humanitarian community. At that time, only the University was offering quality distance learning and I did not want to stop working. Financial reasons were also taken into account, as I could not afford a year living in London without working.

For professional reasons, I move from country to country every six months. So I started in Democratic Republic of the Congo (DRC), continued on a subarctic island, Chad and finished in Antarctica.

Epidemiology is the basis for a public health approach, which is important in looking at the percentage of the population in need. Epidemiology helped me to have strong arguments in prioritising support in difficult situations where the needs are so important but your resources (human as well as financial) are limited.'



# Application and registration process

## How to apply and register

### Getting started

- ❖ Please apply online at [www.londoninternational.ac.uk/onlineapps](http://www.londoninternational.ac.uk/onlineapps)
- ❖ Please ensure you read the 'Guidance notes for online applications (Postgraduate)' before you complete your application: [www.londoninternational.ac.uk/forms/online\\_application\\_forms/guidance\\_notes.pdf](http://www.londoninternational.ac.uk/forms/online_application_forms/guidance_notes.pdf)

### Stage 1

Complete and submit your application form online and send your supporting documentation to:

**Postgraduate Admissions Office,**  
University of London  
International Programmes  
Stewart House  
32 Russell Square  
London WC1B 5DN  
United Kingdom  
Tel: +44 (0)20 7862 8376  
Email: [postgraduate\\_admissions@london.ac.uk](mailto:postgraduate_admissions@london.ac.uk)

If you cannot send all the documentation with your application form, please enclose a letter with the form giving the reasons. We must receive your application plus all documentary evidence and references in London by **30 June** – if you intend to take your first examination in June (of the following year). If your application form or documentary evidence/ references are received after this date, we may not be able to consider your application in time for you to register by the deadline for the next examination period. You might have to postpone your first examination(s) until the next sitting.

### Stage 2

We will acknowledge receipt of your application form and send you a student number to use as a reference whenever you contact the University. Everyone who applies is allocated a number.

### Stage 3

Your application will be considered only when we have received all your documentary evidence and both references. After due consideration you will be told if your application has been successful or not. You are asked to note that if there is a delay in sending in any of the documentation or your references, we will have to wait to receive them before we can begin considering your application. This is because we need to have as much information about you as possible before we can reach a decision.

### Stage 4

If your application is successful, we will send you:

- ❖ an offer of registration, telling you that your application has been accepted and that you have one year in which to register
- ❖ instructions for completion of the online payment and registration process
- ❖ a link to the Regulations.

### Stage 5

Registration needs to be completed by **31 August**. The course starts in **October**. (Please note that a later registration date of **30 November** has been agreed for those registering for individual modules rather than the full awards.)

### Questions ?

If you have any questions about your application once you have submitted it, please contact our Admissions Office at the details opposite.

## Profile: Cassie Trewin | MSc Epidemiology, Norway

The distance learning programme was recommended to me by some colleagues and I was attracted by the course's flexibility. I am really impressed by the professionalism of the course. A lot of time has gone into putting together relevant reading resources for each subject. The computer-based lectures are great because the interactive exercises allow you to

test yourself continually and make the learning experience more fun. The WebBoard gets students connected and tutors are always quick to respond to questions and answer them thoroughly.

I would highly recommend this course to anyone who is considering a career in Epidemiology. You don't just learn the theory, but also all the necessary practical skills for performing research. This course prepares you for everything from planning and conducting studies, to analysing data, writing and reviewing scientific papers.'

Cassie works for the Norwegian Institute of Public Health.



### Notes

- ❖ Applicants come to us from all over the world, with a variety of qualifications, and as a result we have to consider each application thoroughly and on an individual basis. We regret that it is not possible for us to give you any informal advice on your eligibility for admission. For this reason, you must make a formal application before we can tell you whether we can accept you.
- ❖ At its discretion, the University may sometimes consider applications received after 30 June. All such enquiries should be made directly to the Postgraduate Admissions Office.
- ❖ There is a definite start to the study year for these courses – October each year. Materials are despatched, usually by courier, from the beginning of August/September to all students who have paid the registration and module fees. Even if you register as early as June, your study materials will only be sent to you during August/September, in time for an October start.
- ❖ Those wishing to study individual modules for continuing professional development/continuing medical education purposes may apply for modules until 31 August; for such modules registration needs to be completed by 30 November.
- ❖ If you do not hold the qualifications specified we may still consider your application but we will require evidence of your ability to undertake an advanced course of study.

# Fees and useful information

## Payment

The fees given below refer to the 2012-2013 academic year only and are effective from 1 March 2012 until 30 November 2012. Fees are subject to annual review and may be paid in one of two ways:

**EITHER** On registration, a single payment covering the registration fee and all module fees:

|                          |         |
|--------------------------|---------|
| Postgraduate Certificate | £6,610  |
| Postgraduate Diploma     | £9,010  |
| MSc                      | £11,400 |

**OR** Pay the registration fee, plus the fee for each module you are taking in your first year. Then, in subsequent years, you pay the fee for each new module you take.

## Fees for Clinical Trials (CT), Epidemiology (EPI), Global Health Policy (GHP) and Infectious Diseases (ID)

|   |        |
|---|--------|
| Initial registration fee                | £1,050 |
| Fee per core module                     | £1,390 |
| Fee per elective module                 | £600   |
| Fee for final project (EPI, GHP and ID) | £1,790 |
| Fee for integrating module (CT)         | £1,200 |

## Public Health (PH)

|                          |        |
|--------------------------|--------|
| Initial registration fee | £1,050 |
| Fee per core module      | £930   |
| Fee per elective module  | £600   |
| Fee for final project    | £1,790 |

## Individual modules

|   |        |
|---|--------|
| Fee per core module (CT, EPI, GHP and ID) | £1,655 |
| Fee per core module (PH)                  | £1,105 |
| Fee per elective module                   | £1,655 |

## Financial assistance

No financial assistance is available from the University. Some employers in both the public and private sector may be willing to consider offering financial assistance to their employees.

**Students who are resident in the UK** may be able to apply for a Part-time Student Grant or a Career Development Loan. Information can be obtained from the Department of Education and Skills (DIUS) Information Line on 0800 731 9133 or from their website: [www.dfes.gov.uk/studentssupport](http://www.dfes.gov.uk/studentssupport) (for Part-time Student Grants), and the CDL Information Line on 0800 585 505 or from their website: [www.direct.gov.uk/adultlearning](http://www.direct.gov.uk/adultlearning)

**Students with disabilities Disabled students who are resident in the UK** may also be able to apply for a Disabled Student Allowance (DSA). For a copy of the information leaflet (which answers most of the questions commonly asked about DSAs) please contact the Skill Information Line on 0800 328 5050, textphone 18001 0800 328 5050 or email [info@skill.org.uk](mailto:info@skill.org.uk). The guide is also available on the Skill website: [www.skill.org.uk/page.aspx?c=15&p=148#funding](http://www.skill.org.uk/page.aspx?c=15&p=148#funding)

## Armed forces

**Students who are members of the UK Armed Forces** should note that the University of London has been approved by the Ministry of Defence in support of the Enhanced Learning Credits (ELC) Scheme (ELC Provider Reference Number 1284). The Scheme provides financial support to eligible Service personnel who wish to enhance their educational or vocational achievements. The ELC Administration Service website can be found at: [www.enhancedlearningcredits.co.uk](http://www.enhancedlearningcredits.co.uk)

## Questions about the programme

This prospectus should answer all the questions you have before deciding to apply to the University. Please read it carefully before you contact us with any queries. If you do have any further questions, please contact: [programme.enquiries@london.ac.uk](mailto:programme.enquiries@london.ac.uk). When emailing programme enquiries, please state what you have already seen (e.g. website, prospectus) about the programme.

## Personal callers

If you are in London at any time you would be most welcome to visit our offices. Most of our offices are open between 9.00am and 5.30pm, Monday to Friday, but you are advised to telephone first to make an appointment to ensure that the person you want to see is available.

## Information about other qualifications

If you would like information about any of the other qualifications listed on the back cover of this prospectus, please contact:

## The Information Centre

University of London  
Stewart House  
32 Russell Square  
London WC1B 5DN  
United Kingdom  
Tel: +44 (0)20 7862 8360  
Web: [enquiries.londoninternational.ac.uk](mailto:enquiries.londoninternational.ac.uk)

**‘The modules were very relevant to my career, especially environmental health, because humanitarian disasters often affect the environment and the environment causes diseases.’**

Chris Bonfiglioli

Profile: **Chris Bonfiglioli** | MSc Public Health, UK

‘I wanted to do an MSc in health by distance learning, to support my work with MSF and Oxfam. LSHTM is the School with the best reputation. I know a lot of people who have studied with them. It’s helped their careers and they’ve enjoyed their study.

In my opinion, it’s really good to study the course at the same time as working actively in public health management, because you have a lot of practical examples and you are also surrounded by people who’ve got a lot of practical experience – you can ask questions. Although

you miss out on lectures and face-to-face contact with tutors, you’re working in the field and have all the advantages of very knowledgeable colleagues.

The modules were very relevant to my career, especially environmental health, because humanitarian disasters often affect the environment and the environment causes diseases. Communicable diseases was one of the most interesting and important, although not being a medical person I had a bit more trouble with that! Water and sanitation was very

relevant: water-borne diseases and water-related diseases are the biggest problems in most of the places where I’ve worked. But the management modules were also really useful – health management and, as a big part of my role is human resources, the human resources module. Pretty much all of the modules were directly, practically related to my work.’

Chris currently works for Doctors of the World, a medical charity which undertakes a wide range of medical and humanitarian projects.

# Inclusive Practice Policy

The University has a panel that considers applications from students for special examination arrangements.

The aim of the panel is to ensure that disabled and other students with specific access requirements are neither advantaged nor disadvantaged when compared with other students. If you have specific access requirements (such as extra time or special aids), you should complete the relevant section of the application form or write to the **Inclusive Practice Manager** at the address below, enclosing medical and/or other supporting evidence:

**Inclusive Practice Manager**  
University of London International Programmes  
Stewart House  
32 Russell Square  
London WC1B 5DN  
United Kingdom  
Fax: +44 (0)20 7862 8290  
Email: [special.arrangements@london.ac.uk](mailto:special.arrangements@london.ac.uk)

You can request a copy of the University of London's full Inclusive Practice Policy statement. Please refer to the Admissions contact details on page 24, or download it from our website: [www.londoninternational.ac.uk/dissn](http://www.londoninternational.ac.uk/dissn)

While every effort has been made to ensure that the information contained in this prospectus is accurate at the date of publication (March 2012), all matters that it covers may be subject to change from time to time, both before and after a student has registered. In particular, information about the structure and content of programmes is subject to confirmation in the Regulations and registered students should refer to these. All fees are subject to annual review. The University does not intend by publication or distribution of this prospectus to create any contractual or other legal relation with applicants, registered students, their advisers or any other persons. You are strongly advised to check our website ([www.londoninternational.ac.uk](http://www.londoninternational.ac.uk)) for any revisions to this prospectus. We advise you to check local recognition criteria in your own country before applying for any qualification listed in this prospectus. This prospectus is issued free by the University of London.

**Published by: University of London International Programmes (Design, Editorial and Production).**  
**Copyright © University of London, 2012.**

# Study programmes for 2012-2013

We offer a wide range of programmes for study by distance and flexible learning, from full degree programmes to certificates and individual courses/modules. For further information please visit: [www.londoninternational.ac.uk/prospective\\_students](http://www.londoninternational.ac.uk/prospective_students)

## Undergraduate

|                                     |                             |                                      |  |
|-------------------------------------|-----------------------------|--------------------------------------|--|
| ❖ Accounting                        | ❖ Development and Economics | ❖ Information Systems and Management | ❖ Philosophy, Religion and Ethics      |
| ❖ Accounting and Finance            | ❖ Divinity                  | ❖ International Development          | ❖ Politics                             |
| ❖ Accounting with Law               | ❖ Economics                 | ❖ International Relations            | ❖ Politics and International Relations |
| ❖ Banking                           | ❖ Economics and Finance     | ❖ Law                                | ❖ Psychology                           |
| ❖ Banking and Finance               | ❖ Economics and Management  | ❖ Management                         | ❖ Social Sciences                      |
| ❖ Business                          | ❖ English                   | ❖ Management with Law                | ❖ Sociology                            |
| ❖ Business Administration           | ❖ Finance                   | ❖ Mathematics                        | ❖ Sociology with Law                   |
| ❖ Combined degrees                  | ❖ Geography and Environment | ❖ Mathematics and Economics          | ❖ Theology                             |
| ❖ Computing and Information Systems | ❖ History                   | ❖ Philosophy                         |  |
| ❖ Common Law                        | ❖ Information Systems       |                                      |  |
| ❖ Creative Computing                |                             |                                      |  |

## Postgraduate

|   |                                    |  |  |
|---|------------------------------------|--|--|
| ❖ Agricultural Economics                        | ❖ Finance and Financial Law        | ❖ Livestock Health and Production        | ❖ Quantitative Finance                         |
| ❖ Applied Educational Leadership and Management | ❖ Financial Sector Management      | ❖ Managing Rural Development             | ❖ Sustainable Development                      |
| ❖ Applied Environmental Economics               | ❖ Global Health Policy             | ❖ Organizational Psychology              | ❖ Veterinary Epidemiology and Public Health    |
| ❖ Banking                                       | ❖ Human Resource Management        | ❖ Petroleum Geoscience                   |  |
| ❖ Clinical Trials                               | ❖ Infectious Diseases              | ❖ Policy Studies                         | <b>Planned new programmes for 2012-2013</b>    |
| ❖ Economic Policy                               | ❖ Information Security             | ❖ Poverty Reduction: Policy and Practice | (check our website for further developments):  |
| ❖ Education                                     | ❖ International Business           | ❖ Public Financial Management            | ❖ MA in Global Diplomacy                       |
| ❖ Educational and Social Research               | ❖ International Management         | ❖ Public Health                          | ❖ MSc in International Business Administration |
| ❖ Environmental Management                      | ❖ International Management (China) | ❖ Public Management                      |  |
| ❖ Epidemiology                                  | ❖ Law                              | ❖ Public Policy and Management           |  |
| ❖ Finance                                       |                                    |  |  |

### Important note:

We aim to provide the highest quality service to our students. We endeavour to solve any problems you experience quickly and fairly. If, however, you wish to make a complaint our complaints procedure is published on our website and in our Student Handbooks.



# UNIVERSITY OF LONDON INTERNATIONAL PROGRAMMES

All programmes offered through the University of London International Programmes are developed by academics at the University of London's constituent Colleges. Assessment is the responsibility of academics at these Colleges. Currently these include: Birkbeck, Goldsmiths, Heythrop College, Institute of Education, King's College London, The London School of Economics and Political Science (LSE), London School of Hygiene & Tropical Medicine, Queen Mary, Royal Holloway, Royal Veterinary College, School of Oriental and African Studies, and UCL (University College London).

For further information on the range of programmes we offer, please visit our website or contact us at:

The Information Centre, University of London, Stewart House,  
32 Russell Square, London WC1B 5DN United Kingdom

Tel: +44 (0)20 7862 8360

Web: [enquiries.londoninternational.ac.uk](http://enquiries.londoninternational.ac.uk)

[www.londoninternational.ac.uk](http://www.londoninternational.ac.uk)

Follow us on:

 [www.londoninternational.ac.uk/youtube](http://www.londoninternational.ac.uk/youtube)

 [www.londoninternational.ac.uk/facebook](http://www.londoninternational.ac.uk/facebook)

 [www.londoninternational.ac.uk/twitter](http://www.londoninternational.ac.uk/twitter)

 [www.londoninternational.ac.uk/linkedin](http://www.londoninternational.ac.uk/linkedin)

 [www.londoninternational.ac.uk/blog](http://www.londoninternational.ac.uk/blog)  
(student blog)

